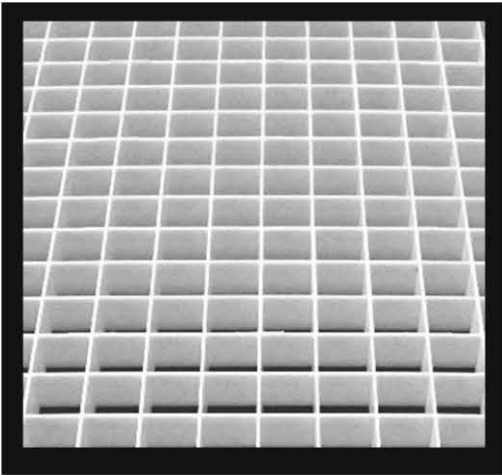


EGGCRATE LOUVERS



EGGCRATE LOUVERS

Eggcrate flat blade plastic lighting louvers are an efficient, economical solution for a variety of lighting and luminous ceiling applications. Acrylic louvers are molded in a light-stable material and are unaffected by ultraviolet exposure and will not yellow or discolor for up to 20 years. Styrene louvers are molded in an ultraviolet stabilized material to resist ultraviolet exposure.

A long time industry standard, the open cell design provides a well-ordered, architectural appearance, while at the same time permitting free circulation of air for lower operating temperatures.

MATERIALS:

UV Stabilized Styrene
Lighting Grade Acrylic

THICKNESS:

1/2"
3/8"

CELL SIZE:

1/2" x 1/2"

Not for use as an air vent in heating and air applications. Contact us for aluminum louver products for use in air handling systems.

POLYSTYRENE 1/2 X 1/2 EGGCRATE LOUVER

Part #	Size	Thick	Color	Carton
45324	23.75" X 47.75"	3/8	White - Economy	15
45322	23.75" X 23.75"	3/8	White - Economy	30
45314	11.75 X 47.75	3/8	White - Economy	30
ALP45-3-24S	23.75" X 47.75"	3/8	Silver - Economy	15
ALP45-3-24	23.75" X 47.75"	3/8	White	15
ALP45-3-24BL	23.75" X 47.75"	3/8	Black	15
ALP45-3-22BL	23.75" X 23.75"	3/8	Black	15
ALP45-3-14BL	14.75" X 47.75"	3/8	Black	15
ALP45-24	23.75" X 47.75"	1/2	White	10
ALP45-22	23.75" X 23.75"	1/2	White	20
ALP45-14	11.75" X 47.75"	1/2	White	20

ACRYLIC 1/2 X 1/2 EGGCRATE LOUVER

Part #	Size	Thick	Color	Carton
45A324	23.75" X 47.75"	3/8	White Economy	15
45A322	23.75" x 23.75"	3/8	White Economy	30
45A314	11.75" x 47.75"	3/8	White Economy	30
ALP45A-3-24	23.75" X 47.75"	3/8	White	15
ALP45A-24	23.75" X 47.75"	1/2	White	10
ALP45A-22	23.75" x 23.75"	1/2	White	20
ALP45A-14	11.75" X 47.75"	1/2	White	20



Capitol Lighting Plastics

WWW.CAPITOLPLASTICS.COM
Email: info@capitolplastics.com
Ph: 916.564.2788 Fax: 916.564.2702