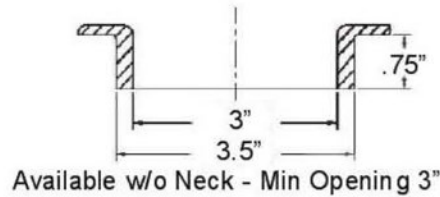


**8", 10" & 10.5"
SMOOTH CUBES**

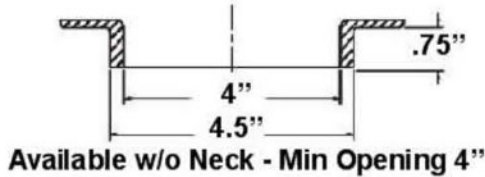
ACRYLIC 8"



Available w/o Neck - Min Opening 3"

CLEAR 20108-CL-XX / WHITE 20108-WH-XX / BRONZE 20108-BR-XX / SMOKE 20108-SM-XX

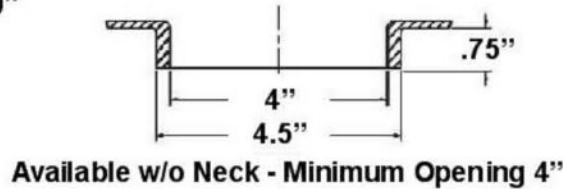
ACRYLIC 10"



Available w/o Neck - Min Opening 4"

CLEAR 20110-CL-XX / WHITE 20110-WH-XX / BRONZE 20110-BR-XX / SMOKE 20110-SM-XX

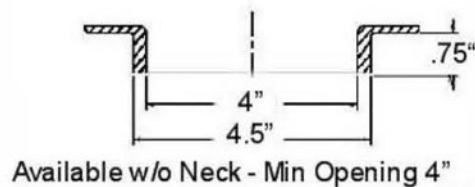
POLYCARBONATE 10"



Available w/o Neck - Minimum Opening 4"

CLEAR 10110-CL-XX / WHITE 10110-WH-XX / BRONZE 10110-BR-XX / SMOKE 10110-SM-XX

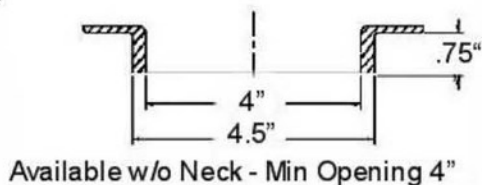
ACRYLIC 10.5"



Available w/o Neck - Min Opening 4"

CLEAR 20111-CL-XX / WHITE 20111-WH-XX / BRONZE 20111-BR-XX / SMOKE 20111-SM-XX

POLYCARBONATE 10.5"



Available w/o Neck - Min Opening 4"

CLEAR 10111-CL-XX / WHITE 10111-WH-XX / BRONZE 10111-BR-XX / SMOKE 10111-SM-XX

MATERIALS:
Acrylic
Polycarbonate

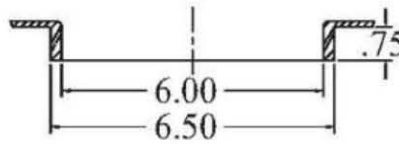
Notice:
Capitol Lighting Plastics, Inc.
assumes no responsibility for
suitability of luminaires and applications.
The use of our products at excessive
temperatures with high UV output light
sources may cause degradation of the
material.



WWW.CAPITOLPLASTICS.COM
Email: info@capitolplastics.com
Ph: 916.564.2788 Fax: 916.564.2702

12" & 15"
SMOOTH CUBES

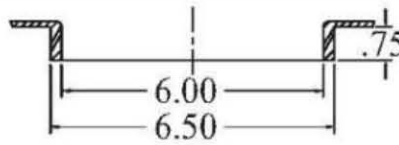
ACRYLIC 12"



AVAILABLE WITHOUT NECK
MINIMUM OPENING 6.00 INCH

CLEAR 20112-CL-XX / WHITE 20112-WH-XX / BRONZE 20112-BR-XX / SMOKE 20112-SM-XX

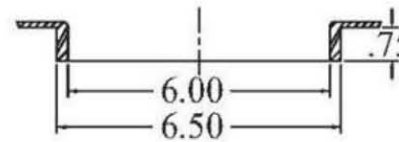
POLYCARBONATE 12"



AVAILABLE WITHOUT NECK
MINIMUM OPENING 6.00 INCH

CLEAR 10112-CL-XX / WHITE 10112-WH-XX / BRONZE 10112-BR-XX / SMOKE 10112-SM-XX

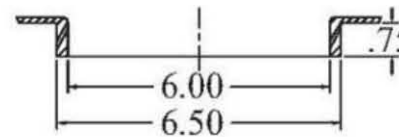
ACRYLIC 12"



AVAILABLE WITHOUT NECK
MINIMUM OPENING 6.00 INCH

CLEAR 20115-CL-XX / WHITE 20115-WH-XX / BRONZE 20115-BR-XX / SMOKE 20115-SM-XX

POLYCARBONATE 15"

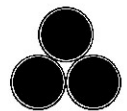


AVAILABLE WITHOUT NECK
MINIMUM OPENING 6.00 INCH

CLEAR 10115-CL-XX / WHITE 10115-WH-XX / BRONZE 10115-BR-XX / SMOKE 10115-SM-XX

MATERIALS:
Acrylic
Polycarbonate

Notice:
Capitol Lighting Plastics, Inc.
assumes no responsibility for
suitability of luminaries and applications.
The use of our products at excessive
temperatures with high UV output light
sources may cause degradation of the
material.



Capitol Lighting Plastics

WWW.CAPITOLPLASTICS.COM
Email: info@capitolplastics.com
Ph: 916.564.2788 Fax: 916.564.2702