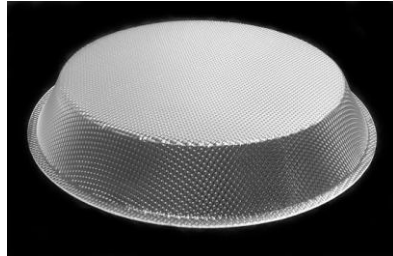
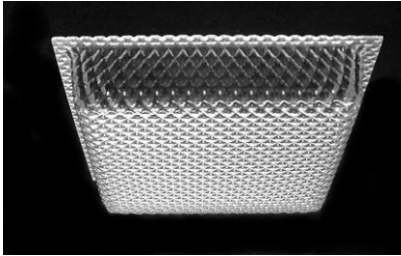
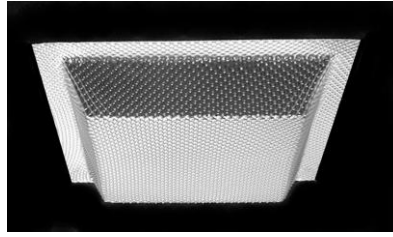
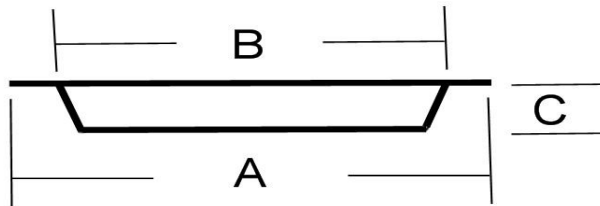


Flanged Drop Diffusers



HOW TO ORDER FLANGED DROP DIFFUSERS



**ADVISE DIMENSIONS**

- A: OVERALL WIDTH AND LENGTH
- B: BODY WIDTH AND LENGTH
- C: DEPTH

**SPECIFY MATERIAL DESIRED**

- STIPPLE FINISH WHITE ACRYLIC
- SMOOTH CLEAR ACRYLIC
- P12 PRISM ACRYLIC
- P35 PRISM ACRYLIC

**MATERIALS:**

- Acrylic
- HID Acrylic
- Hi Impact Acrylic
- Polycarbonate

**Maximum Temperature:**

Acrylic material is rated for use in fixtures that do not exceed 180° F.

Polycarbonate material is rated for use in fixtures that do not exceed 240° F

*Capitol Lighting Plastics, Inc. assumes no responsibility for suitability of luminaries and applications. The use of our products at excessive temperatures with high UV output light sources may cause degradation of the material*



**Capitol Lighting Plastics, Inc.**

271 Opportunity St, Ste C  
 Sacramento, CA 95838  
 916.564.2788 F: 916.564.2702  
 info@capitolplastics.com

WWW.CAPITOLPLASTICS.COM